

# SEDONA RED ROCKING NEWS

Sedona Gem and Mineral Club  
P.O. Box 3284, Sedona, AZ 86340  
sedonagemandmineral.org

Newsletter Editor: Marge Herkenham,  
herk@commspeed.net



November 2007  
VOLUME 52, ISSUE 8

MEMBER AMERICAN FEDERATION OF  
MINERALOGICAL SOCIETIES

MEMBER ROCKY MOUNTAIN  
FEDERATION OF MINERAL SOCIETIES

November General Meeting is Tuesday, 7:00 pm, Nov. 20, at the Sedona Library off of Dry Creek Road in West Sedona. Guests are welcome. The Board of Directors meets at 5:30 pm the day before the General Meeting, also at the library. Any members are welcome to attend and participate in input.

---

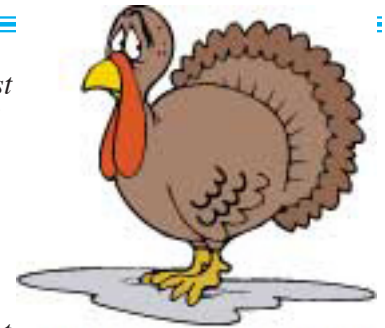
---

## Featured Speaker For The November Meeting Will Be:

long-time Sedona resident and Honorary Club member **Paul Lindberg**, consulting geologist, whose presentation is titled, *Geology of the Grand Canyon, Verde Valley and Sedona Areas*. He will show slides and explain how Sedona sits geologically relative to Arizona and the Colorado Plateau. Paul will also bring his "take apart" model of the Grand Canyon which depicts the geological evolution of this scenic wonder.

Paul has taken Club members on field trips through Sedona, the Verde Valley and Jerome explaining and writing about the geologic history of these areas. His guidebook used on these field trips is an excellent resource containing maps, a glossary of geologic terms and descriptions and explanations of how and when the rocks and mountains were formed. Also included in the guidebooks is a colored stratigraphic drawing of the area and a description and cross-sectional drawing of the Devil's Kitchen sinkhole. Here is an excerpt from Paul's guidebook, when it describes going down Lower Red Rock Loop Road: "Stop No 5: Pull off on the right edge of road where we can view the Cathedral Rocks in the distance. Note the numerous spires and vertical joints that strongly influence weathering that occurs throughout the Sedona area. When seen from the air buttes like Cathedral Rocks, Bell Rock and the western margin of Munds Mountain all show a pronounced northwest-southeast grain of sharp ridges and deeply weathered-out notches. Even though not always conspicuous when seen from the ground this condition looks like "sliced bread" when viewed from the air. These NW trending joints sometimes contain black basalt DIKES that follow deep-seated fractures that extend to great depths within the Earth's crust. One such dike passes right through the central saddle of the Cathedral Rocks butte and enlarges into a

*wider feeder vent just west of the summit. Hot liquid MAGMA once flowed upward through this conduit about 10-15 Ma and fed lava flows that once covered this region. It is quite probable that the hot intrusive rock strengthened the adjacent rocks and helped to make Cathedral Rock withstand weathering better than the area around it. This lava vent is but one of many that is associated with the House Mountain BASALT lava dome that lies to the south of the view point on the horizon."* This description is followed by a schematic drawing showing how hot magma once rose from the earth and fed lava flows that passed through the dike in the central part of the butte.



**Holiday Season Coming**

Paul and his wife, Phyllis, helped design and build the stratigraphic wall in uptown that mimics the different layers of rocks that are found in the region. His contributions to the community and our Club are immeasurable. We are privileged to have Paul and Phyllis as members of our Club and to have Paul share some of his vast knowledge of the area with us.

## Cookie Break

will be efficiently handled as usual by our Refreshment Committee of Judy Feldman and Marge Schwartz. Only Janet Walker and Al Fortunata signed up on the list for November cookies. Phone Judy at 284-3534 to volunteer to contribute.

**General Meeting Minutes  
for Tuesday, October 9, 2007**

---

---

President Kelly Quester began the business meeting at 7 pm with an amusing list of “you know you’re a rockhound if...” statements. Fifty-one members and guests were present.

Long-time member Harry Brown was recognized as an Honorary Member for his support of the Club for almost 30 years. The Club also celebrated Harry’s 90th birthday. Harry is definitely a rockhound as he still takes yearly trips to the copper country of Upper Michigan! He has often prepared displays of copper artifacts, with much in them of historical interest, for our Club functions and also for the Sedona Historical Society event that featured our Gem & Mineral Club.

Pat McMahan asked members to review the criteria for the field trip chairperson’s duties, then consider volunteering for this position. Copies of the “job description” were made available during the General Meeting and were also published in the October newsletter. Pat and others will gladly assist the new chairperson as he/she grows accustomed to the position.

Program VP Linda Yee reviewed topics for upcoming meetings. Geologist Paul Lindberg, who is also a Club member, will be speaking at the November meeting, while the holiday party will take the place of a December meeting. Linda also reminded members that a new Program VP is needed for 2008.

Treasurer Ray Cooke reported that the Club is financially secure with a balance of \$19,894. A detailed report of income and expenses is available during each business meeting for any member to review.

**Since the yearly election is scheduled to occur during the November General Meeting**, a nominating committee consisting of Board Members Pat McMahan and Ed Hodges and member Shelley Petluck will contact all members regarding nominations for open board and committee positions. Current committee chairs and board members will also be contacted to determine their interest in continuing in their positions for 2008.

President Kelly noted that the Club is re-instituting the practice of rewarding members who display their favorite rocks, jewelry or other rockhound-related objects at General Meetings. Each member who brings items to display will receive three raffle tickets for the evening’s raffle.

The Club is saddened by the passing of Dorothy Bennett,

whose husband John also passed away this year.

The speaker for the night was Keith Horst, a master lapidary artist and instructor at Yavapai Community College.

*General Meeting Minutes submitted by  
Secretary Janet Walters, 11/05/2007.*

## **Executive Board Meeting Minutes for Monday, October 8, 2007, Summarized.**

Present: Kelly Quester, Linda Yee, Ray Cooke, Pat McMahan, Linda Kappel, Ed Hodges, Janet Walters, Rose Marie Licher, Marge Herkenham, and committee chair Mary Jane Cooke.

**General business:** After a review of the proposed criteria for bestowing honorary memberships on members who have made significant contributions to the Club’s success, the Board decided that Harry Brown was entitled to an honorary membership. Harry will receive the award at the General Meeting on October 9.

The Board critiqued the Members’ Night program held in September. Participation by more members at the 2008 Members’ Night will be encouraged. The Board also decided that more participation is needed at each General Meeting. In the past, members were called to encourage them to bring displays to each meeting. The Board approved a suggestion to offer 3 raffle tickets to each member who brings in a display to the monthly General Meetings.

The Board authorized the purchase of 3 pairs of walkee talkees to be used by field trip participants.

The site for the 2008 June picnic will be the picnic grounds at Montezuma Well. Members will need to bring some tables and chairs, as the picnic tables at the site may not be sufficient.

It’s known that we will have important vacancies to be filled for next year — Program VP and Field Trip VP positions will be open for the upcoming election. As of October 8, no one had responded to the “classified ad” in the October newsletter regarding the Field Trip VP position. A Historian is also still needed. A slate of officers will be presented by the nominating committee at the November meeting.

Plans were finalized for our Gem and Mineral Show - October 27 and 28; Pat and Linda Yee reported on last-minute activities for the Gem and Mineral Show .

New business: Mary Jane Cooke gave a report on her committee's (Community Education Committee) suggested activities, and various possibilities were considered by the Board. [More details follow later in the newsletter - editor.] *Board Meeting Minutes submitted by*

*Secretary Janet Walters*

## **2007 Gem and Mineral Show A Great Success!**

*(From Linda Yee - chairman)*

Our 2007 Gem and Mineral Show was the best ever, thanks to all those members who came and pitched in to help set up, direct traffic, put up signs, move tables, cover the welcome table and kid's corner, and do all the other hundreds of jobs to make a successful show. There were 33 vendors, 10 interesting displays cases, 3 demonstrators, and the impressive meteorite display from ASU.

There was a good turnout of locals and out-of-town visitors, despite Pet-A-Palooza going on at the same time. Traffic controller Ed Hodges was heard asking approaching cars "Rocks or dogs?" as he directed people to the appropriate parking areas! The Journalism Club at the high school did a great job with the refreshments. And the Kid's Corner was always busy with happy children painting rocks, stringing beads and playing games. Bob Yee and Ed Perry talked continuously for two days as they demonstrated core drilling and sphere making. Many kids were fascinated with Cliff Montgomery's tumbler, as they reached in and took out shiny specimens.

Setting up on Friday afternoon was very helpful. With a lot of assistance, this was done in a little over 2 hours. Some students asked what we were doing, and Brian Orsborn answered that we were setting up for a rock show, then the students asked what group was playing! The raffle was a huge success, with the Grand Prize amethyst cathedral going to member Susan Zepkin.



*Mary*

Watch for more information, as the financial reports come out. **THANK YOU TO EVERYONE WHO HELPED PUT ON THIS SUCCESSFUL EVENT!**

In the month of October, we lost two long-time members of our club — **Mary Gillett and Lee Birch.**

**Mary Gillett**, an Honorary Member of the Sedona Gem and Mineral Club, then known as the Oak Creek Gem & Mineral Society, died at 93 years of age at Sedona Winds, where she lived the last 13 years of her life. A memorial service was held at the Church of the Red Rocks on Nov. 1.

In her earlier years, old friends recall that she taught in Idaho, then on the Navajo Reservation. From there, she and her father moved to Cottonwood, where she also taught a few years.

Later, she moved to a house that was located a few miles west of Boynton Pass on a small dirt road. There her father, who died in 1975, built the house they lived in, and that property and house is what long-time members of the Gem & Mineral Club recall most about her. Every year, we don't remember how many, the big Club June Picnic was held at her house. The acreage was mostly in native vegetation, and the view behind the house was of the cliffs that lead up to Bear Mountain — a great scenic spot. It is remembered that she had many humming bird feeders, and that attendees at the yearly picnic were encouraged to bring sugar to keep her in supplies for the hummingbirds. There were also interesting rocks and some Indian artifacts here and there, plus fossils. Some one else remembered that she had once cared for an injured eagle until it recovered. During those active years, she also did jewelry and lapidary work, and had various machines for this work on her property. She was active in Audubon Society and was also active in Keep Sedona Beautiful. For most of her years in her charming house, she had a friend, another retired teacher, who lived on the property also. While she was able, she enjoyed going on Club rockhound trips.

She was 80 years old when she left that lovely property and house and went to live in an apartment in Sedona Winds, in the Village of Oak Creek. There she still maintained her hummingbird feeders, and had photographs of the birds to show her visitors. She also had retained a rock tumbler which she had in her apartment and still enjoyed using it, and giving tumbled rocks to her visitors. In 2003, she moved into Assisted Living at Sedona Winds until the time of her death.

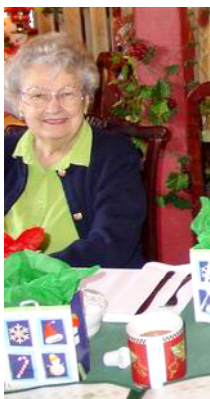
If any of you long-time members have any other interesting recollections, bring them to the next Club meeting and share them with us.

On October 28 **Lee Birch** died at the age of 93, at Sedona Winds. The community of Sedona owes much to Lee and her husband Si, who died about 10 years ago. After Si's

service in World War II, the couple moved to Los Angeles, where Si joined the Los Angeles Public Works Department, serving as an engineer — storing up much experience that would later help him in what he accomplished in Sedona. Meanwhile, Lee enthusiastically launched into many activities. She served as Editor of the Culver City PTA, Girl Scout Leader, and among other things, she organized the Tortuga Jeep Club and was its trip researcher for 14 years. She was a member of the Sedona Gem & Mineral Club for many years, but age prevented her from keeping up with going on field trips.

Si retired in 1974, and they were rapidly immersed in activities in their new hometown. While Si became very active in City of Sedona problems and affairs, offering his engineering experience, Lee lent her energy and resources to the Verde Valley Republican Women's Club, KSB, Taxpayers' Association, Adult Community Center, Red Rock Rovers jeep club, SRRHS Booster Club Charter Member, our own Gem & Mineral Club, and interestingly to the Gold Prospectors Association of America, plus many other organizations. Also, there were many projects and needs to which Lee donated money, recently to help buy 12 automatic defibrillators to put in many of the public buildings or emergency vehicles in Sedona. She dreamed of finding gold which she could donate to Sedona Medical Center. Lee and Si contributed so much to Sedona, and it's only a just reward that Hwy 89A from the Y to Dry Creek Road was named the Si Birch Memorial Highway. As time passes, and us old-timers leave the scene, it's good to remember the many contributions made by people who lived here in earlier days.

Lee especially loved gold prospecting — owning several metal detectors, and studying many maps to plan trips. They both belonged to the Red Rock Rovers jeep club, and when that organization really wasn't as eager to prospect old gold mines as she hoped, she started her own group, called the "Lucky Lee Club," to pursue her dreams.



She wrote frequent letters to politicians and leaders when she thought something could be improved. Linda

Yee remembers this, because she used to type them for her.

Lee designed her own home in Sedona, and also a cabin up in the Harts Prairie area, houses which Si built.

We who knew them both well, knew and enjoyed how close they were to each other. They clearly never fell out of love.

Memorial Services were at the Church of the Red Rocks on Saturday, November 3.

*(contributed by Marge Herkenham who with her husband also moved to Sedona in 1974, as did the Birches in the same year.)*



## **HOLIDAY PARTY**

Plans are in hand for the Holiday Party, which will be Tuesday, Dec. 4, at the Episcopal church, on Arroyo Pinon Drive in West Sedona. Dinner will be served at 6:00 pm.

There will be a sign-up sheet that will be passed around at the General Meeting of Nov. 20. On it, list a dish for eight that you will bring, and note whether you will attend. There will also be a sign-up sheet for help needed in the kitchen, both during and after serving the food. Also, someone will be needed to set up tables, add table covers. Plus there will be a few more odd jobs, such as preparing the raffle prizes.

The club will provide all the necessary tableware, also ice tea and coffee. Plan to bring an approximately \$5.00 wrapped gift for exchange — mark it for him or her or for either. There's entertainment to be planned also.

The party was greatly enjoyed last year, hope you are planning to come this year.



## **Rockhound Christmas Carol**

On the twelfth day of Christmas,

My true love gave to me,

Twelve tumblers tumbling,

Eleven perfect spear points,

Ten diamond saw blades,

Nine crystal clusters,

Eight agate nodules,

Seven sheets of silver,

Six sapphire "star" stones,

Five Golden Rings,

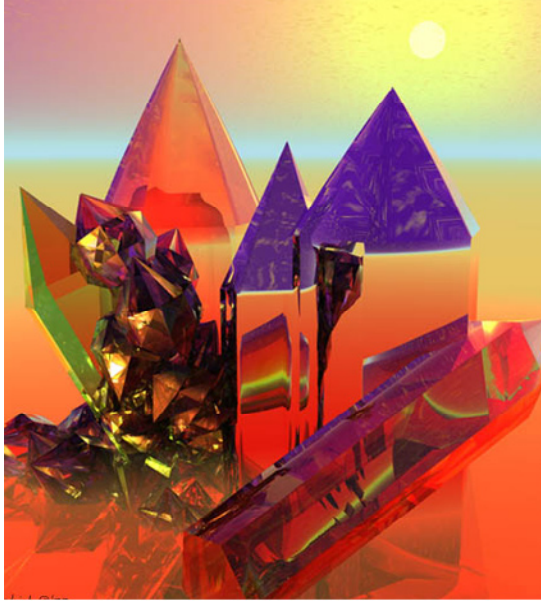
Four fluorescent lamps,

Three gem books,

Two trilobites,

And a branch from a petrified tree!

*Author unknown, source Gneiss Times, Wickenburg G&M Society, Wickenburg Arizona, Dec 2*



May you have lots of good rockhounding days in 2008

## **Student Awards— New Program**

*by Mary Jane Cooke, Student Awards Chair*

The Sedona Gem and Mineral Club proudly announces the recent availability of Student awards, in addition to our existing Annual High School Scholarship of \$1000 .

This year, an award of up to \$300 will be available to a High School Senior who demonstrates creative ability in Jewelry or Lapidary skills. Either a High School teacher or a member of our Club may nominate the student, who will provide proof of enrollment in an accredited educational institution in lapidary/jewelry coursework to the Awards Committee, The proof may be on a non-matriculating basis or as part of college courses.

Also in recognition of creative talent fulfilled by students enrolled in lapidary/jewelry courses at Yavapai College, the Club will make funds available, up to \$250, to an instructor in these studies for an expensive supply item which the teacher will make available to students.

Funding for library books related to Club Earth Science interest will be available to Sedona Schools.

The Sedona Gem and Mineral Club makes these funds available to the student community to encourage our young people to pursue their interests and possible careers in the Earth Sciences and creative applications.

## **Grand Raffle Prize Winners**

It seemed very nice that one of our own members won the Grand Raffle prize (which was a giant amethyst cathedral specimen) at our Sedona Gem and Mineral Show this year. Susan Zepkin is not only one of our own members, but she prepared two display cases to put in our show. Doug Freifield participated in the preparation of the cases.

Congratulatory photograph with Susan and her partner, Doug Freifield follows:



**Susan Pipkin &  
Doug Freifield**



## Sedona Gem and Mineral Club November Newsletter, 2007

Volume 52, Issue #8

Nov. 24-25--WICKENBURG, ARIZONA: Show, "Way Out Wickenburg Way Gem and Art Show"; Wickenburg Gem & Mineral Club; Wickenburg Community Center, 160 N. Valentine St.; Sat. 9-4, Sun. 9-4; adults \$3; door prizes, grab bags, silent auction; contact Lucille Burroughs, 481 America St., Wickenburg, AZ 85390, (928) 684-0099; e-mail: gnlu@w3az.net.

Jan. 18-20 - Globe, AZ 51st Annual Gila County Gem & Mineral Show. Gila County Fairgrounds 3 miles North of Junction US60 & US70, Globe, AZ, Contact Andy Clark 928-473-3042

Jan 1-27--LAUGHLIN, NEVADA: Annual show; Cloud's Jamboree; Avi Resort & Casino, 10,000 Aja Macav Pkwy.; 7-6 each day; free admission; indoor and outdoor vendors; contact Dick Cloud, P.O. Box 1917, Quartzsite, AZ 85346, (866) 558-7719; e-mail: Cloudsjamboree@tds.net; Web site: www.cloudsjamboree.com.

Jan. 4-6--MESA, ARIZONA: 36th annual show, "Flag Gem & Mineral Show"; Arizona Mineral

and Mining Museum Foundation; Mesa Community College, Dobson Rd. and U.S. Hwy. 60; Fri. 9-5, Sat. 9-5, Sun. 9-5; P.O. Box 41834, Mesa, AZ 85274, (480) 987-8958; e-mail: dminerals@yahoo.com.

February 2-17. Tucson Gem & Mineral Show for 2008

March 21-23, 2008  
32nd Annual Verde Valley Gem, Mineral and Jewelry Show. Held at Mingus Union High School, 1801 Fir St, Cottonwood AZ. Sponsored by the Mingus Gem and Mineral Club. Display, Silent auctions, Raffles, exhibits, jewelry & lapidary dealers and supplies, fluorescent display, kid's activities. Hours: Fri & Sat 9 AM- 5 PM, Sun 10 AM - 4 PM Admission: Fri \$1, Sat & Sun \$3, 3-day pass \$5. Parking: Free. Contact: Doug Evenson 928-634-0459, dougeverson@verdecomm.net, Mike Ramsey 928-634-0666 ramsey6264@yahoo.com



**Sedona Gem & Mineral Club**  
**P.O. Box 3284**  
**Sedona, AZ 86340**

